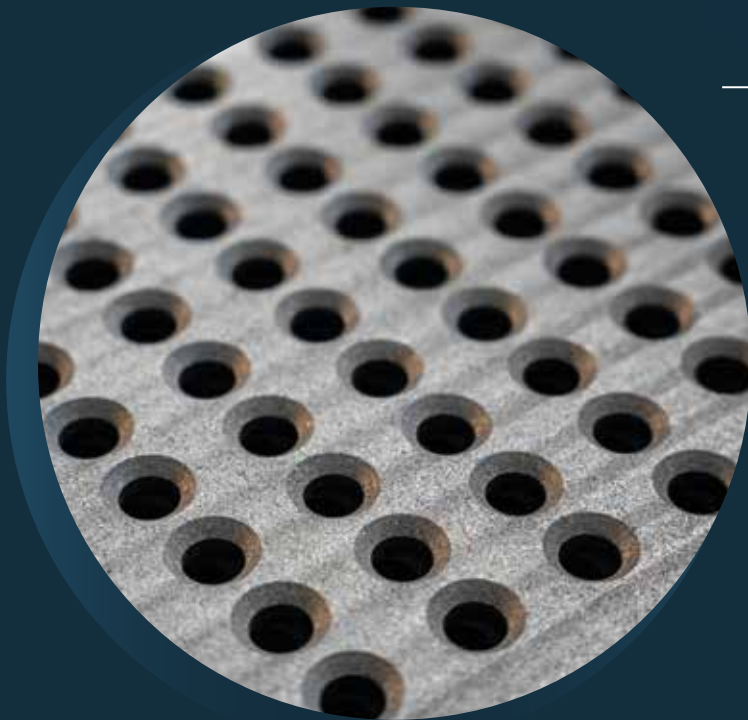




Ei

# The Go-To Boutique Provider of Precision Graphite Solutions.

At Ei6, we combine the scale and expertise of a global graphite supplier and machining partner with the attentiveness of a boutique team.



Our work is built on three core values:

Customer Excellence



Quality Commitment



Solution Oriented

You don't have to choose between quality and service — we deliver both.



# About Us



1958

## H.M.KEARNEY CO. FOUNDED

Harry M. Kearney mostly sold consumable products for the foundry and steel industry. In 1966, Harry began importing Japanese graphite electrodes into the United States.



1985

## GES GRAPHITE INC FORMED

Keith Kearney provided small diameter electrodes and specialty graphite for the US market.



2010

## GES SP, LLC CREATED

An opportunity presented itself to create a similar GES Graphite business model in South America. In 2014, GES identified a need to build a graphite machine shop to produce more value added graphite products.



2017

## ADVANCED GRAPHITE MACHINING USA, LLC ACQUIRED

GES orchestrated the purchase of the former GrafTech facility in Parma, OH. GES Graphite, Inc. underwent new branding to GES-AGM in 2018 after the purchase.



2020

## AERO INDUSTRIES ACQUIRED

Graphite machine shop specializing in EDM Graphite and related components.



2021

## ADVANCED GRAPHITE POWDERS, LLC ESTABLISHED

Processing and supply of various powder grades to the North and South American markets.



2022

## ADVANCED GRAPHITE POWDERS GMBH LAUNCHED

The German entity for supplying graphite powder products to various European markets.



2025

## GES-AGM EVOLVES INTO Ei6

GES-AGM evolves into Ei6, marking a new chapter as a boutique, high-performance materials partner with a modern identity and clear market focus.





# Who We Are

## MISSION

To create a personalized experience for each customer's unique carbon and graphite needs by being the most nimble and strategic provider in the industry—without compromising on quality.

## VISION

To be the go-to boutique provider of precision graphite solutions, offering unmatched quality, service, and flexibility that larger companies can't replicate.



# What We Do

From raw material to finished component, we offer end-to-end graphite solutions engineered for performance, reliability, and scale. Our vertically integrated capabilities support mission-critical industries, from semiconductors and aerospace to energy and defense.



## Distribution

We maintain a global inventory of extruded, molded, and isostatic graphite to ensure fast, reliable distribution.



## Machining

We deliver precision-machined graphite components built to exact specifications for prototypes or production.



## Powders

We produce graphite powders with the purity, consistency, and conductivity essential to demanding applications.



# Products

## Specialty Graphite

- Extruded Graphite
- Vibration Molded Graphite
- Isostatic Graphite

## Powder

- Synthetic Graphite
- Natural Graphite Flake
- Expandable Graphite
- Amorphous Graphite
- Coke

## Thermal Management Material

- Graphite Insulation
- Graphite Felt
- Graphite Foil

## Services

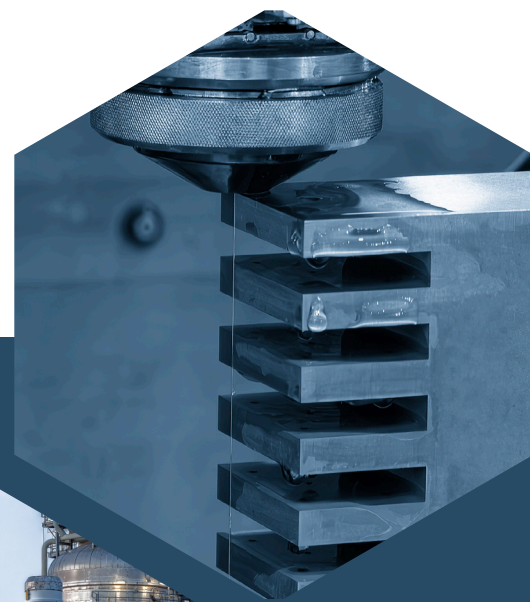
- LoOx™ Treatment
- Purification

## Graphite Electrodes



# Markets We Serve

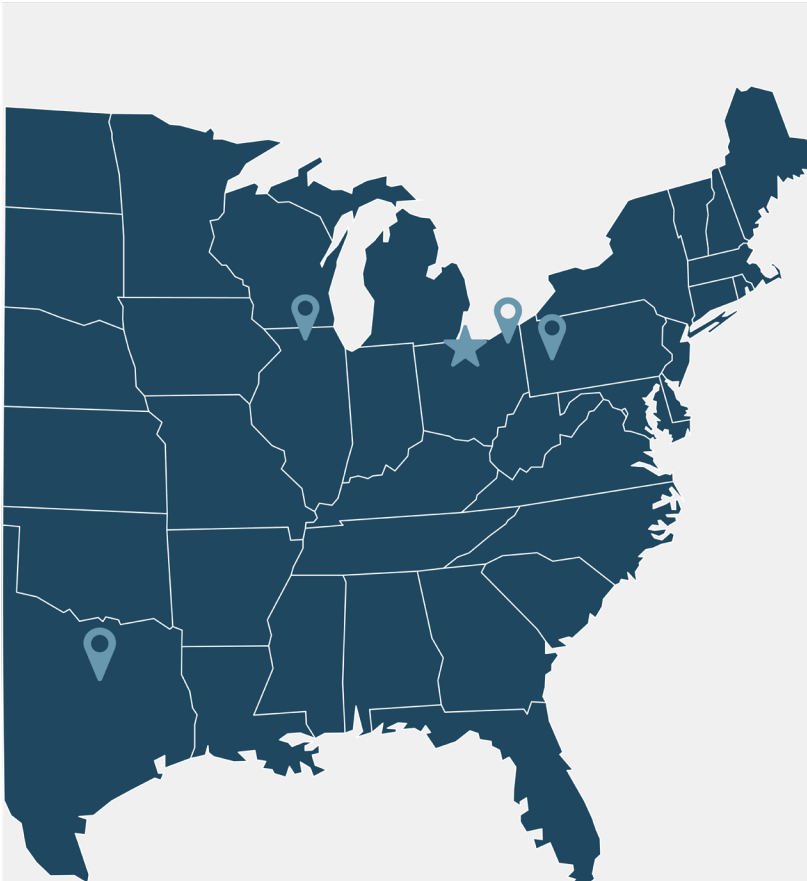
- Aerospace
- Aluminum and Non-Ferrous Metals
- Automotive
- Chemicals
- Continuous Casting – non-ferrous
- Electric Discharge Machining (EDM)
- Electronics
- Energy Generation
- Glass and Ceramics
- High Temperature Plastics
- High Temperature Technology
- Iron, Steel and Ferro Alloy
- Medical Technology
- Mining
- Oil & Gas
- Plastics
- Pulp and Paper
- Semiconductor
- Solar Energy
- Structural Insulation Panels
- Tool and Mold Manufacture
- Vacuum Heat Treating








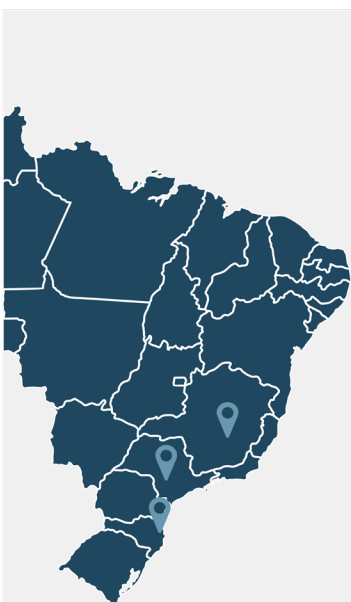



# Locations

Ei6 operates a full suite of facilities—including manufacturing, warehousing, sales, and logistics. With our global footprint grounded by our Parma, Ohio headquarters, we ensure seamless, localized service and support wherever our customers are.



-  **Parma, OH - Headquarters & Manufacturing**  
12300 Snow Road  
Parma, Ohio 44130  
USA
-  **Emlenton, PA - Warehouse & Sales Office**  
2 Penn West Way  
Emlenton, PA 16373  
USA
-  **Jefferson, OH - Warehouse**  
1085 W. Jefferson - Eagleville Rd,  
Jefferson, OH 44047  
USA
-  **Harvard, IL - Warehouse**  
450 Commanche Cir.,  
Harvard, IL 60033  
USA
-  **Dallas, TX - Sales Office**  
3811 Turtle Creek Blvd. Ste 560,  
Dallas TX 75219  
USA



-  **São Paulo, Brasil - Manufacturing Facility & Sales Office**  
Av. Marechal Rondon, 1000  
Osasco, SP 06093-010  
Brasil
-  **Betim, Brasil - Manufacturing Facility**  
Rua Gracyra Resse de Gouveia, 780  
Norte Betim, MG 32689-328  
Brasil
-  **Joinville, Brasil - Manufacturing Facility**  
Rua Germano Steimbach, 48  
Joinville, SC 89221-630  
Brasil



-  **Hamburg, Germany - Warehouse**  
Altenwerder Hauptstrasse 5  
21129 Hamburg  
Germany

LET'S CONNECT





[customersupport@element6.com](mailto:customersupport@element6.com)