



Specialty Product: Iso-Molded

Quality, Service, and Consistency

Iso-Molded Graphite Overview

We offer multipurpose isostatically molded grades developed for fine-grain applications, increased strength and density, and excellent machinability. These materials are perfect for applications including continuous casting, crucibles, heating elements, sintering trays, semiconductor process fixturing.



	Properties	Particle Size	Apparent Density	Electrical Resistivity	Flexural Strength	Compressive Strength	CTE (rt to 100°C)	Thermal Conductivity
	Grade	inches / μm	g/cm^3	$\Omega\text{inch} / \mu\Omega\text{m}$	psi / MPa	psi / MPa	$10^{-6}/^{\circ}\text{F} / 10^{-6}/^{\circ}\text{C}$	BTU/hr-ft- $^{\circ}\text{F} / \text{W}/\text{mK}$
Multi-Purpose	PFI-15	0.0006 / 15	1.78	4.6 / 11.5	5800 / 40	11310 / 78	2.7 / 4.8	64 / 110
	PFI-20	0.0004 / 10	1.78	5.2 / 13.0	6670 / 46	12470 / 86	2.5 / 4.6	61 / 105
	PFI-25	0.0006 / 15	1.81	5.0 / 12.5	7830 / 54	13920 / 96	2.7 / 4.8	72 / 125
	PFI-26	0.0005 / 14	1.85	3.5 / 9.0	6545 / 45	12325 / 85	2.6 / 4.8	75 / 130
	PFI-27	0.0006 / 15	1.82	5.0 / 13.0	7685 / 53	16965 / 117	3.0 / 5.5	58 / 101
	PFI-28	0.0003 / 7	1.85	4.7 / 12.0	7975 / 55	15805 / 109	3.3 / 5.9	64 / 110
	PFI-35	0.0008 / 20	1.85	6.8 / 17.0	9280 / 64	16820 / 116	3.0 / 5.4	46 / 80
	PFI-45	0.0002 / 5	1.86	6.0 / 15.0	11020 / 76	19575 / 135	3.3 / 6.0	50 / 84

PFI-Overview Rev.2

NOTE: The above data should be regarded as general information, not guaranteed specification limits.

This information is not to be taken as a warranty of representation for which we will assume legal responsibility nor permission or recommendation to practice any patented invention without license. It is offered solely for your consideration, investigation and verification.



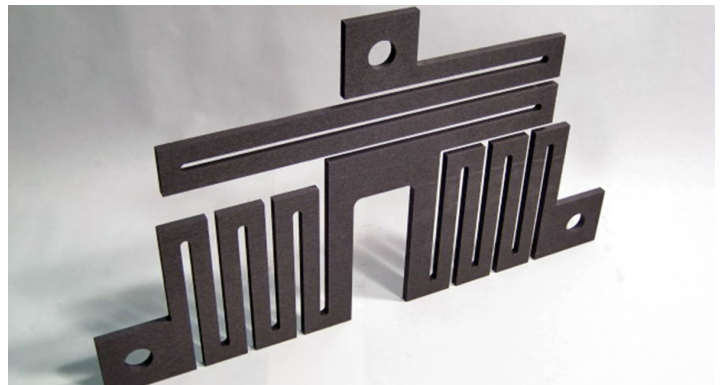
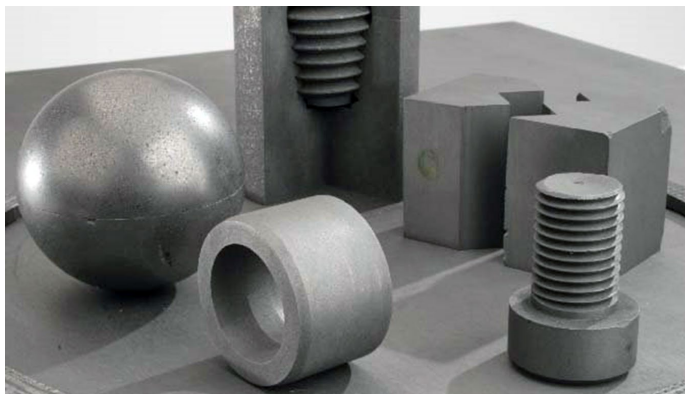


Specialty Product: Iso-Molded

Quality, Service, and Consistency

Iso-Molded Graphite Overview

We offer multipurpose isostatically molded grades developed for fine grain applications, increasing strength and density, and excellent machinability. These materials are perfect for applications including continuous casting, crucibles, heating elements, sintering trays, semiconductor process fixturing.



	Properties	Particle Size	Apparent Density	Electrical Resistivity	Flexural Strength	Compressive Strength	CTE (rt to 100°C)	Thermal Conductivity
	Grade	inches / μm	g/cm^3	$\Omega\text{inch} / \mu\Omega\text{m}$	psi / MPa	psi / MPa	10-6/ $^{\circ}\text{F}$ / 10-6/ $^{\circ}\text{C}$	BTU/hr-ft- $^{\circ}\text{F}$ / W/mK
Multi-Purpose	XTJ-10	0.0006 / 15	1.76	4.6 / 11.5	7975 / 55	13050 / 90	1.8 / 3.2	61 / 105
	XTJ-15	0.0006 / 15	1.77	4.1 / 10.5	6380 / 44	12325 / 85	1.9 / 3.5	69 / 120
	XTJ-30	0.0006 / 15	1.80	4.1 / 10.5	9860 / 68	17255 / 119	2.3 / 4.2	69 / 120
	XTJ-34	0.0006 / 15	1.86	3.5 / 9.0	10150 / 70	18270 / 126	2.1 / 3.9	86 / 150
	ATJ	0.001 / 25	1.76	4.6 / 11.7	4500 / 31	9570 / 66	1.7 / 3.1	70 / 121
Multi-Purpose Densified	XTC-10	0.0006 / 15	1.83	4.6 / 11.5	8700 / 60	14500 / 100	1.8 / 3.2	61 / 105
	XTC-15	0.0006 / 15	1.82	4.1 / 10.5	7250 / 50	12325 / 85	1.8 / 3.5	70 / 120
	XTC-30	0.0006 / 15	1.85	4.1 / 10.5	11020 / 76	19285 / 133	2.3 / 4.2	69 / 120

XTC-XTJ-Overview Rev.2

NOTE: The above data should be regarded as general information, not guaranteed specification limits.

This information is not to be taken as a warranty of representation for which we will assume legal responsibility nor permission or recommendation to practice any patented invention without license. It is offered solely for your consideration, investigation and verification.



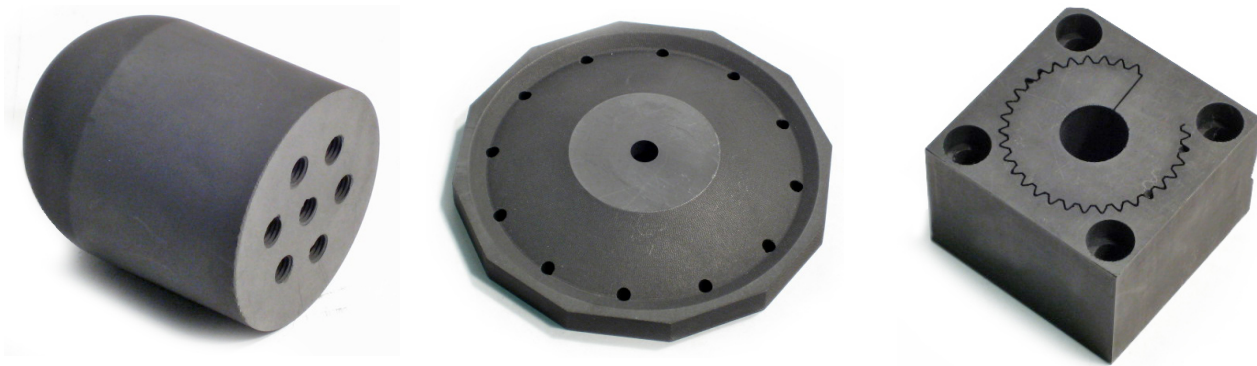


Iso-Molded EDM Graphite

Quality, Service, and Consistency

Graphite Grades for any EDM Graphite Application

We offer a complete range of graphite grades to suit many of your EDM graphite applications. Ranging from the best removal rates and the finest detail, plus reduced and electrode wear, these grades are more than capable. Our sales support team can help with choosing the right grade and for your job.



	Properties	Particle Size	Apparent Density	Electrical Resistivity	Flexural Strength	Compressive Strength
	Grade	inches / μm	g/cm^3	$\Omega\text{inch} / \mu\Omega\text{m}$	psi / MPa	psi / MPa
Multi-Purpose/ EDM	AE-15	0.0005 / 12	1.80	.00054 / 1370	6500 / 45	16500 / 114
	AE-20	0.0005 / 12	1.80	.00049 / 1240	7500 / 52	16500 / 114
	AE-25	0.0004 / 9	1.82	.00048 / 1220	7977 / 55	18420 / 127
	AE-30	0.0003 / 7	1.78	.00050 / 1270	87500 / 60	18000 / 124
	AE-50	0.0002 / 5	1.84	.00060 / 1500	11000 / 76	24200 / 167
	AE-60	0.0002 / <4	1.88	.00050 / 1320	13500 / 93	19000 / 188

EDM-Overview Rev.0

NOTE: The above data should be regarded as general information, not guaranteed specification limits.

This information is not to be taken as a warranty of representation for which we will assume legal responsibility nor permission or recommendation to practice any patented invention without license. It is offered solely for your consideration, investigation and verification.

